

BUY THE BLOCK

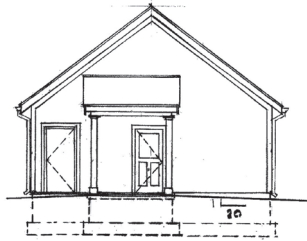
GREENLINING FOR RACIAL AND ECONOMIC EQUITY

ERASING BARRIERS • HOUSING FIRST

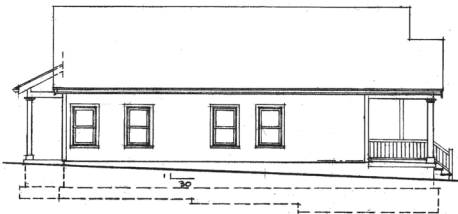
THE NORTON



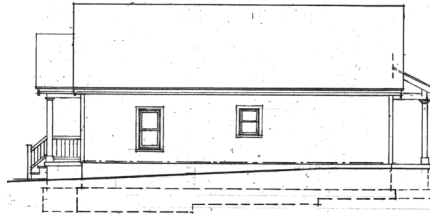
FRONT VIEW



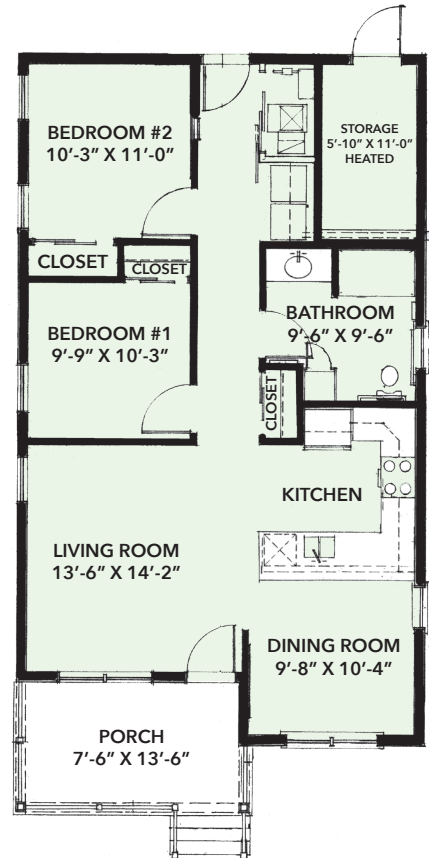
BACK VIEW



LEFT SIDE VIEW



RIGHT SIDE VIEW



Ranch • 1033 sq. ft. • fully handicap accessible • 2 bedroom • 1 bath • \$89,000

The Norton is a two-bedroom ranch that is perfect for the homeowner seeking a smaller home. The layout of this design has an open floor plan with interconnected living areas providing the home with a more spacious feel. This home is built on a concrete slab with no basement, and is fully handicap accessible providing many benefits to families with members who require special supports.

Additional Special Features: • Open front porch • Full package of Energy Star appliances: refrigerator, stove, range, dishwasher, washer and dryer • Electric heat pump heating and cooling systems (central air) • Built-in electric stove • Nice size heated storage area in the rear of the house • Walk-in or roll in shower • Rear visitable entrance with 1:20 low profile sidewalk from the house to the driveway • Laundry hook-up for washer and dryer • Detached garage

This house is an Energy Star Certified Home – Version 3.1; HERS Index 50

FOR MORE INFORMATION, VISIT: cityofrochester.gov/buytheblock